

TWODIO TYPE A

FROM KES 3.8M*

EXPERIENCE LLIVAGE | **STAY** . SHOP . SOCIALISE

PHASE 1A



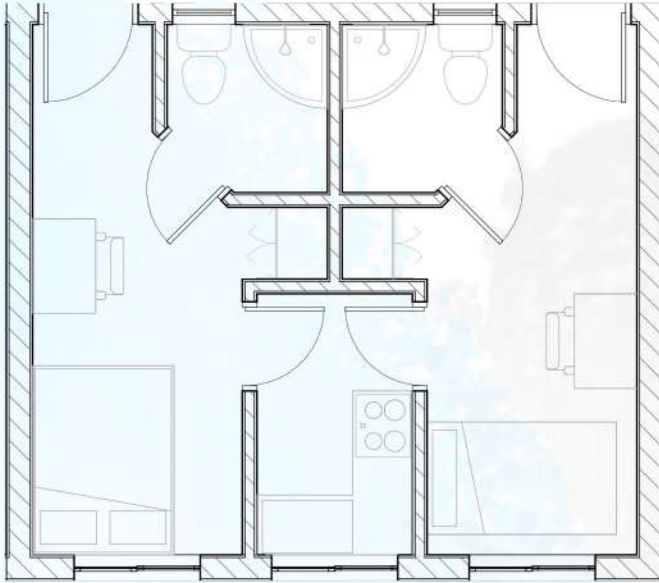
31.8 SQM



Colive



KMRC Mortgage Compliant



BLOCK E



BLOCK D



TWODIO

BUY FROM:

KES 3.8M

RENT FROM:

KES 22,000 PER MONTH

MORTGAGE FROM:

KES 28,832 PER MONTH



Connectivity



Pre-paid
Electric Meters



Pre-paid
Water Meters



Optional
Rooms with
Balcony



Water Treatment



KONGOWEA VILLAGE
EXPERIENCE LLIVAGE

0703 108 108

kongoweavillage.co.ke

TWODIO TYPE A

FROM KES 3.8M*

EXPERIENCE LLIVAGE | STAY . SHOP . SOCIALISE

PHASE 1A



LOOKING FOR COZY AND AFFORDABLE LIVING SPACE?

OUR TWODIO A apartments are perfect for Buy-to-let investors and those looking for a shared living space without sacrificing privacy. Sized at 31.5 square meters, these apartments come with two separate bedrooms, each with its own bathroom and a shared kitchenette. Buy from KES 3.8M or rent each room from KES 11,000 per month; combined rental of KES. 22,000 per month. With a mortgage options starting from KES 28,832 per month, you can now own your dream home in the heart of the city.



0703 108 108

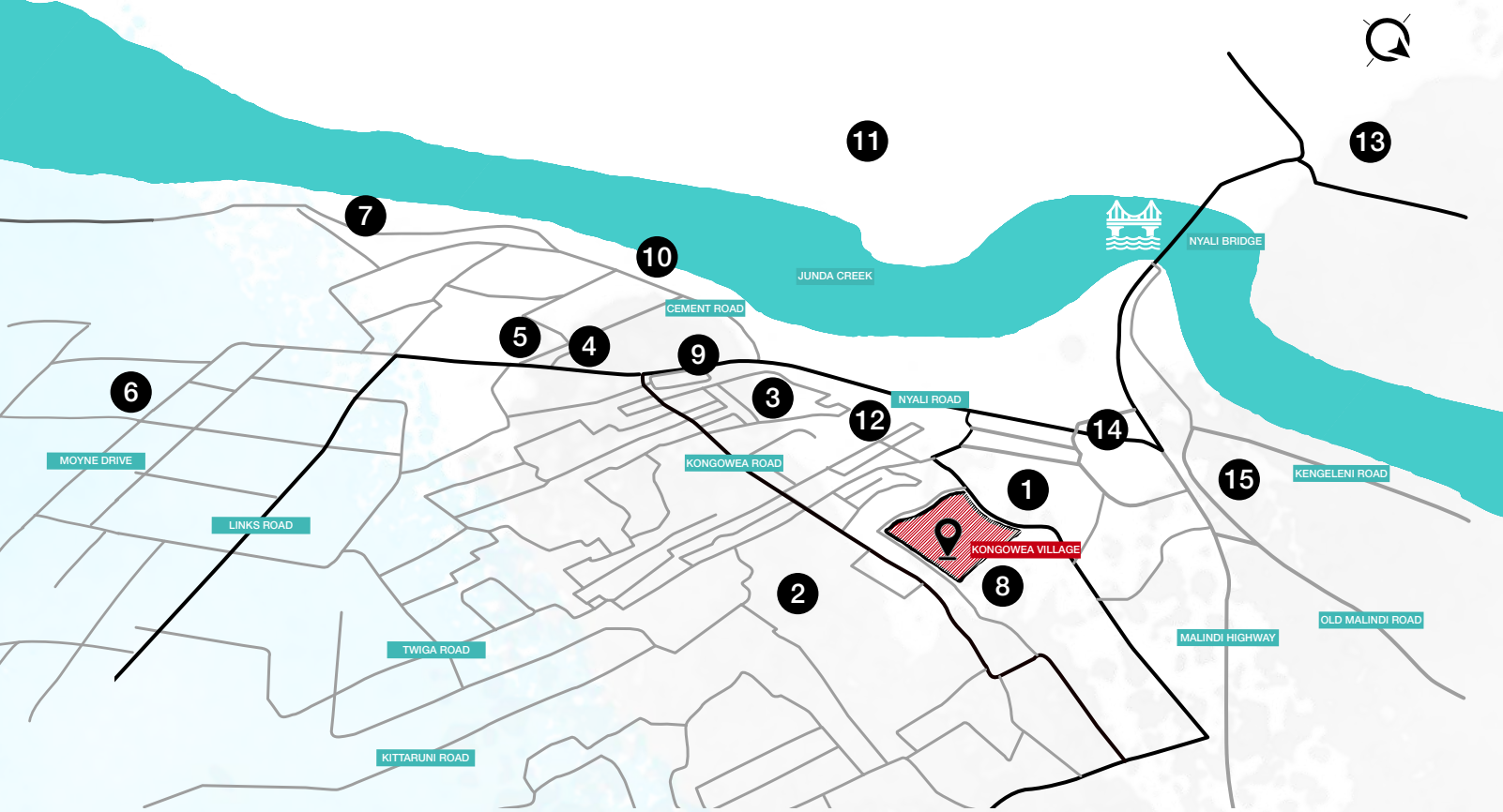
kongoweavillage.co.ke

TWODIO TYPE A

FROM KES 3.8M*

EXPERIENCE LLIVAGE | **STAY** . SHOP . SOCIALISE

LOCATION



MAP LEGEND:

- | | | |
|---------------------------|---------------------------------|-------------------------------------|
| 1. KONGOWEA MARKET | 6. NYALI POLICE STATION | 11. COAST GENERAL HOSPITAL |
| 2. CHIEF OFFICE, KONGOWEA | 7. HOTEL ENGLISH POINT, MOMBASA | 12. KHER COUNTY STADIUM |
| 3. MASJID RAHMA MOSQUE | 8. KONGOWEA PRIMARY SCHOOL | 13. TECHNICAL UNIVERSITY OF MOMBASA |
| 4. NYALI CINEMAX | 9. RATNA SQUARE | 14. KENGELENI CENTRE |
| 5. CHANDARANA FOOD PLUS | 10. TAMARIND MOMBASA | 15. JOCHAM HOSPITAL |

0 MINUTES

TO KONGOWEA MARKET

<5 MINUTES

TO NYALI BRIDGE

5 MINUTES

TO NYALI CINEMAX

10 MINUTES

TO MOMBASA CBD

20 MINUTES

TO BAMBURI

25 MINUTES

TO MOI INTERNATIONAL AIRPORT

AMENITIES



Walkability



24 HR Security + CCTV



Water Treatment



Back-up Power Supply



Water Storage



Disabled Friendly



KONGOWEA VILLAGE
EXPERIENCE LLIVAGE

0703 108 108

kongoweavillage.co.ke

TWODIO TYPE A

FROM KES 3.8M*

EXPERIENCE LLIVAGE | **STAY** . SHOP . SOCIALISE



7% YIELD | 15% CAPITAL APPRECIATION

A unique investible asset class
A prime location
A true inflation hedge



>7% YIELD WITH SHORT LETS

Passive Income: Watch your money grow



GREEN BUILDING

Sustainable building for sustainable living



RENTAL MANAGEMENT

A fully managed, secure environment



All information, details, specifications, plans, images ("information") included in the Kongowea Village brochure, website, email or any marketing materials are indicative and shown for reference only. Actual product and specifications may vary in dimension or detail. Pricing as advertised is in USD and can be payable in KES equivalent at the prevailing conversation rate at time of payment. Prices may vary as per exchange rate fluctuation.

For details, please contact the Sales Centre on 0703 108 108



KONGOWEA VILLAGE
EXPERIENCE LLIVAGE

© Copyright - Belco Properties LLP

0703 108 108

kongoweavillage.co.ke