

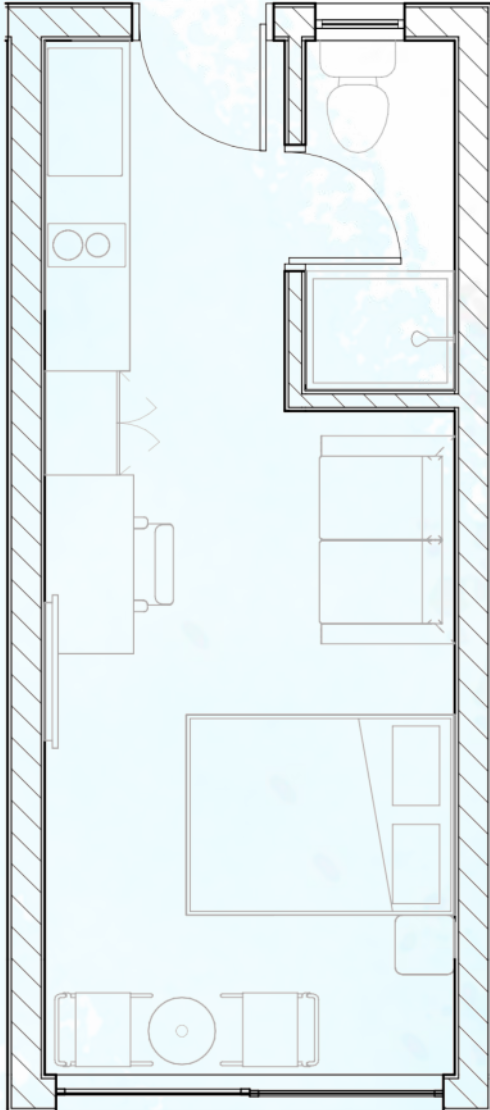
## PHASE 1A



22.5 SQM



KMRC Mortgage Compliant



### BLOCK E



### BLOCK D



STUDIO



Connectivity



Pre-paid Electric Meters



Pre-paid Water Meters



Optional Rooms with Balcony



Water Treatment

## PHASE 1A



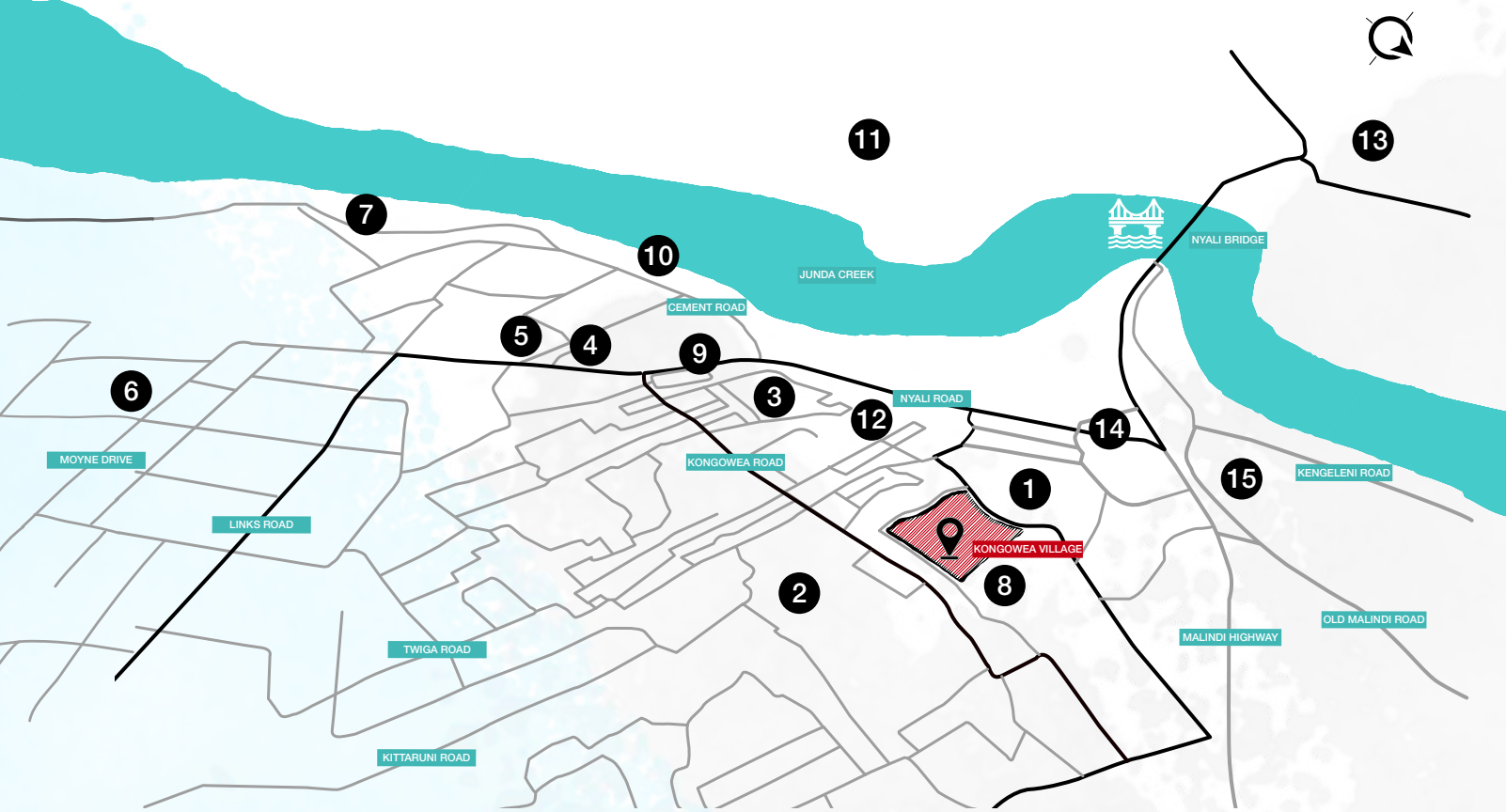
### ARE YOU SEARCHING FOR A STUDIO XL+ APARTMENT THAT PROVIDES AMPLE SPACE AND CONVENIENCE?

Look no further than our **Studio XL+ units**, which are specifically tailored to meet your requirements. At 22.5 square meters, these apartments feature a quality kitchenette, a bathroom, a roomy bedroom/ living area, and a balcony to soak in fresh air. Buy from KES 2.5M or rent from KES 14,500 per month. Mortgage options start from KES 19,134 per month, you can now live the life you always wanted.





## LOCATION



### MAP LEGEND:

- |                           |                                 |                                     |
|---------------------------|---------------------------------|-------------------------------------|
| 1. KONGOWEA MARKET        | 6. NYALI POLICE STATION         | 11. COAST GENERAL HOSPITAL          |
| 2. CHIEF OFFICE, KONGOWEA | 7. HOTEL ENGLISH POINT, MOMBASA | 12. KHER COUNTY STADIUM             |
| 3. MASJID RAHMA MOSQUE    | 8. KONGOWEA PRIMARY SCHOOL      | 13. TECHNICAL UNIVERSITY OF MOMBASA |
| 4. NYALI CINEMAX          | 9. RATNA SQUARE                 | 14. KENGELENI CENTRE                |
| 5. CHANDARANA FOOD PLUS   | 10. TAMARIND MOMBASA            | 15. JOCHAM HOSPITAL                 |

0 MINUTES

TO KONGOWEA MARKET

<5 MINUTES

TO NYALI BRIDGE

5 MINUTES

TO NYALI CINEMAX

10 MINUTES

TO MOMBASA CBD

20 MINUTES

TO BAMBURI

25 MINUTES

TO MOI INTERNATIONAL AIRPORT

## AMENITIES



Walkability



24 HR Security + CCTV



Water Treatment



Back-up Power Supply



Water Storage



Disabled Friendly



KONGOWEA VILLAGE  
EXPERIENCE LLIVAGE



## 7% YIELD | 15% CAPITAL APPRECIATION

A unique investible asset class  
A prime location  
A true inflation hedge



## >7% YIELD WITH SHORT LETS

Passive Income: Watch your money grow



## GREEN BUILDING

Sustainable building for sustainable living



## RENTAL MANAGEMENT

A fully managed, secure environment



All information, details, specifications, plans, images ("information") included in the Kongowea Village brochure, website, email or any marketing materials are indicative and shown for reference only. Actual product and specifications may vary in dimension or detail. Pricing as advertised is in USD and can be payable in KES equivalent at the prevailing conversation rate at time of payment. Prices may vary as per exchange rate fluctuation.

For details, please contact the Sales Centre on 0703 108 108