

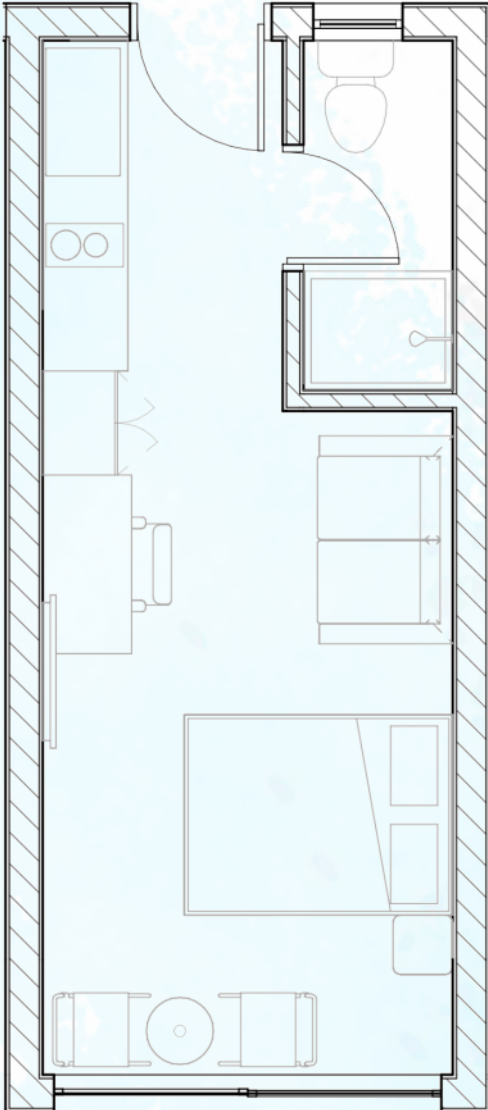
PHASE 1A



22.5 SQM



KMRC Mortgage Compliant



BLOCK E



BLOCK D



STUDIO

BUY FROM:

KES 2.5M

RENT FROM:

KES 14,500 PER MONTH

MORTGAGE FROM:

KES 19,134 PER MONTH



Connectivity



Pre-paid Electric Meters



Pre-paid Water Meters



Optional Rooms with Balcony



Water Treatment



KONGOWEA VILLAGE
EXPERIENCE LLIVAGE

PHASE 1A

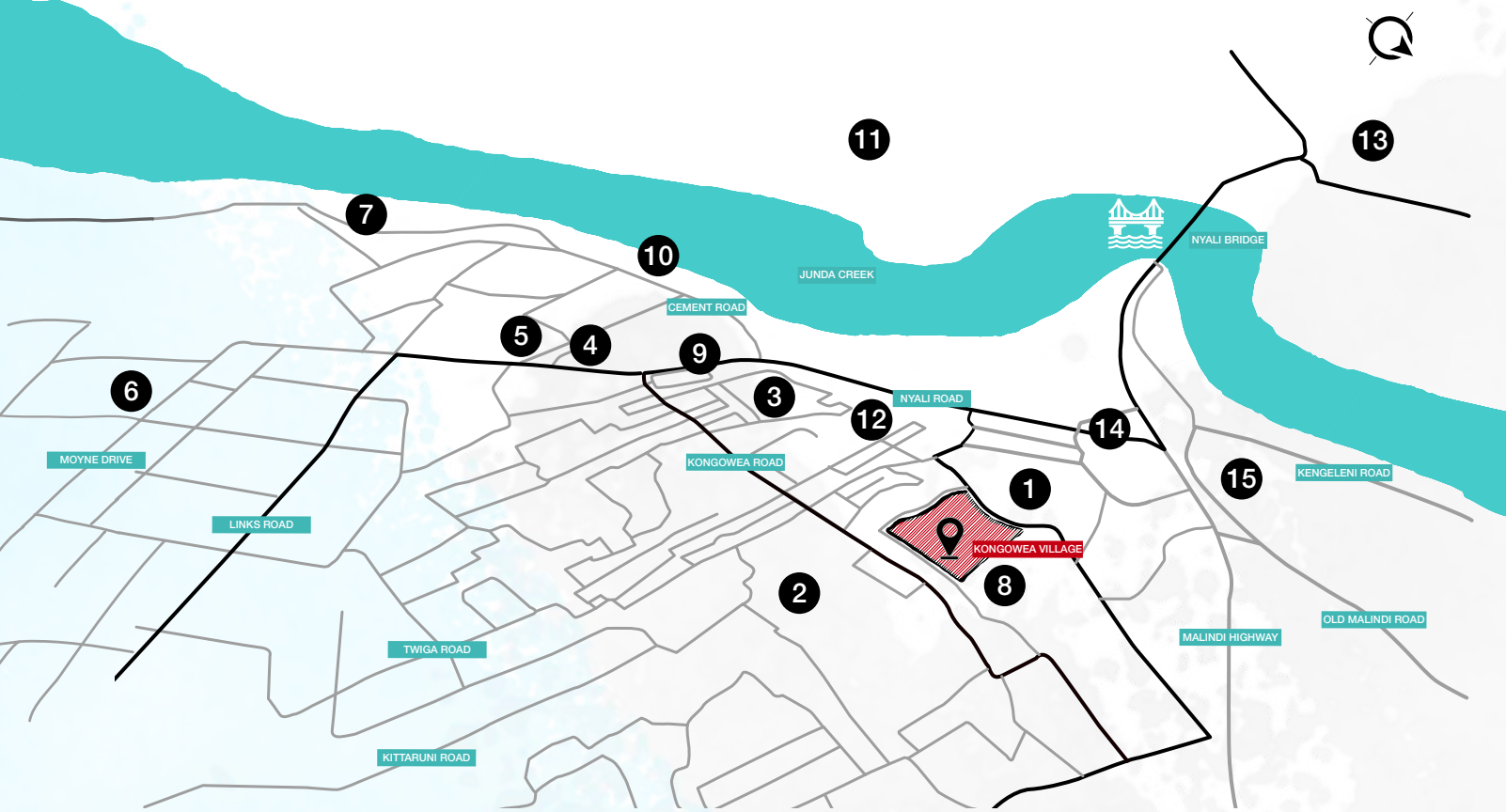


LOOKING FOR A COZY AND AFFORDABLE LIVING SPACE?

Bring the outdoors inside with our **Studio XL apartments**. At 22.5 square meters, these units come with a quality kitchenette, a bathroom, and a spacious bedroom/living area. Buy from KES 2.5M or rent from KES 14,500 per month. Mortgage options start from KES 19,134 per month, you can now own your dream home without straining your finances.



LOCATION



MAP LEGEND:

- | | | |
|---------------------------|---------------------------------|-------------------------------------|
| 1. KONGOWEA MARKET | 6. NYALI POLICE STATION | 11. COAST GENERAL HOSPITAL |
| 2. CHIEF OFFICE, KONGOWEA | 7. HOTEL ENGLISH POINT, MOMBASA | 12. KHER COUNTY STADIUM |
| 3. MASJID RAHMA MOSQUE | 8. KONGOWEA PRIMARY SCHOOL | 13. TECHNICAL UNIVERSITY OF MOMBASA |
| 4. NYALI CINEMAX | 9. RATNA SQUARE | 14. KENGELELE CENTRE |
| 5. CHANDARANA FOOD PLUS | 10. TAMARIND MOMBASA | 15. JOCHAM HOSPITAL |

0 MINUTES

TO KONGOWEA MARKET

<5 MINUTES

TO NYALI BRIDGE

5 MINUTES

TO NYALI CINEMAX

10 MINUTES

TO MOMBASA CBD

20 MINUTES

TO BAMBURI

25 MINUTES

TO MOI INTERNATIONAL AIRPORT

AMENITIES



Walkability



24 HR Security + CCTV



Water Treatment



Back-up Power Supply



Water Storage



Disabled Friendly



KONGOWEA VILLAGE
EXPERIENCE LLIVAGE



7% YIELD | 15% CAPITAL APPRECIATION

A unique investible asset class
A prime location
A true inflation hedge



>7% YIELD WITH SHORT LETS

Passive Income: Watch your money grow



GREEN BUILDING

Sustainable building for sustainable living



RENTAL MANAGEMENT

A fully managed, secure environment



All information, details, specifications, plans, images ("information") included in the Kongowea Village brochure, website, email or any marketing materials are indicative and shown for reference only. Actual product and specifications may vary in dimension or detail. Pricing as advertised is in USD and can be payable in KES equivalent at the prevailing conversation rate at time of payment. Prices may vary as per exchange rate fluctuation.

For details, please contact the Sales Centre on 0703 108 108