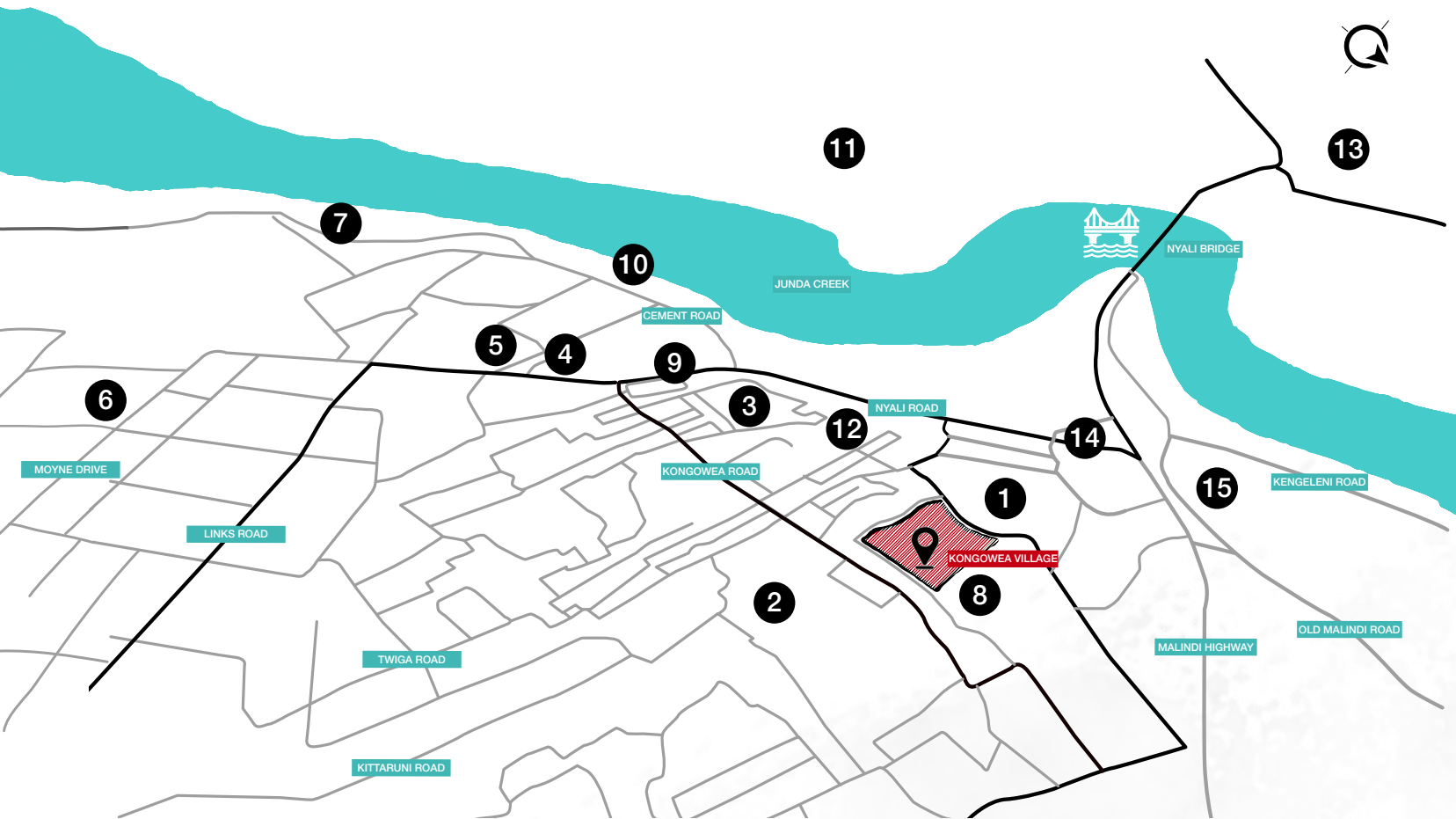




LOCATION YOUR NEIGHBOURHOOD

EXPERIENCE LLIVAGE | STAY . SHOP . SOCIALISE



MAP LEGEND:

1. KONGOWEA MARKET

2. CHIEF OFFICE, KONGOWEA

3. MASJID RAHMA MOSQUE

4. NYALI CINEMAX

5. CHANDARANA FOOD PLUS
6. NYALI POLICE STATION

7. HOTEL ENGLISH POINT, MOMBASA

8. KONGOWEA PRIMARY SCHOOL

9. RATNA SQUARE

10. TAMARIND MOMBASA
11. COAST GENERAL HOSPITAL

12. KHER COUNTY STADIUM

13. TECHNICAL UNIVERSITY OF MOMBASA

14. KENGELENI CENTRE

15. JOCHAM HOSPITAL

0 MINUTES

TO KONGOWEA MARKET

<5 MINUTES

TO NYALI BRIDGE

5 MINUTES

TO NYALI CINEMAX

10 MINUTES

TO MOMBASA CBD

20 MINUTES

TO BAMBURI

25 MINUTES

TO MOI INTERNATIONAL AIRPORT

EXPERIENCE LLIVAGE

Kongowea Village is a locally diverse, urban town centre with a unique character.
A complete lifestyle ecosystem with homes from

KES. 2.1M – NOW THAT’S VALUE FOR MONEY!

Design Thinking: contemporary, sustainable, convenience....
more than an ordinary village



Ultimate
Location



Natural
Ventilation



Maximise
Daylight



Solar Shading



Community
Integration



Mixed Use
Development

Nyali Bridge



Connectivity



Pre-paid
Electric Meters



Pre-paid
Water Meters



Optional
Rooms with
Balcony



Disabled
Friendly



KONGOWEA VILLAGE
EXPERIENCE LLIVAGE

kongoweavillage.co.ke

LIVE YOUR LIFE THE FUN 20s

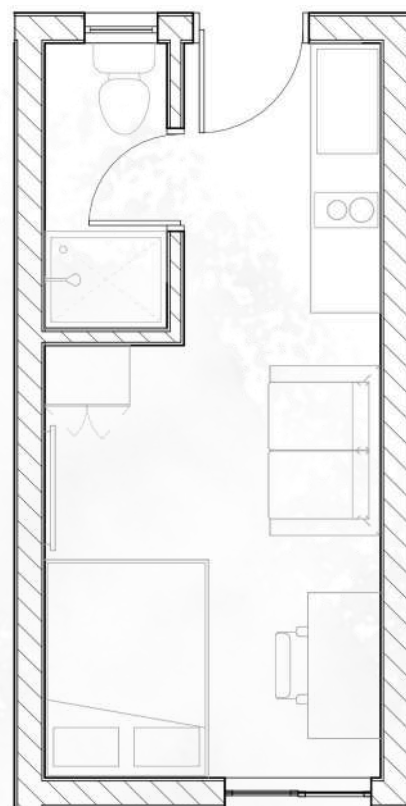
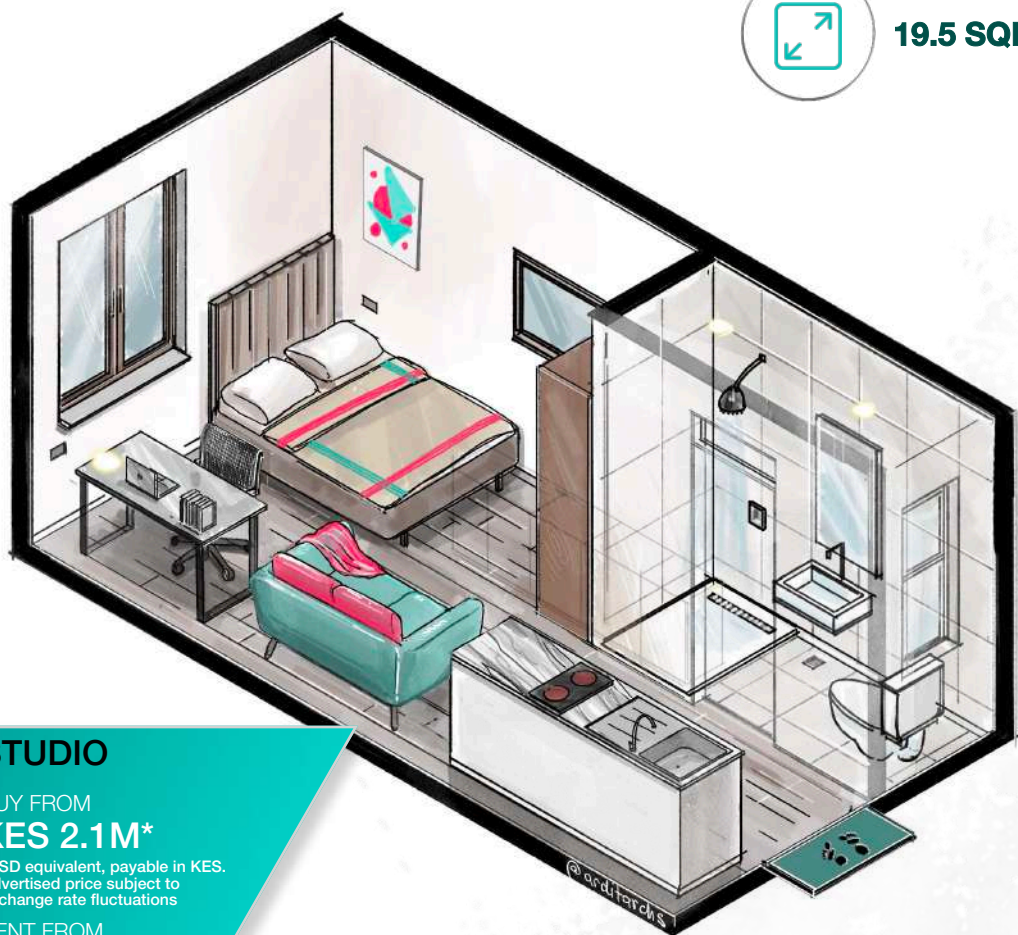
EXPERIENCE LLIVAGE | **STAY** . SHOP . SOCIALISE



19.5 SQM



**KMRC Mortgage
Compliant**



STUDIO

BUY FROM
KES 2.1M*

*USD equivalent, payable in KES.
Advertised price subject to
exchange rate fluctuations

RENT FROM
KES 12,000
PER MONTH

MORTGAGE FROM
KES 15,793
PER MONTH

0703 108 108

kongoweavillage.co.ke

LIVE YOUR LIFE THE FUN 20s

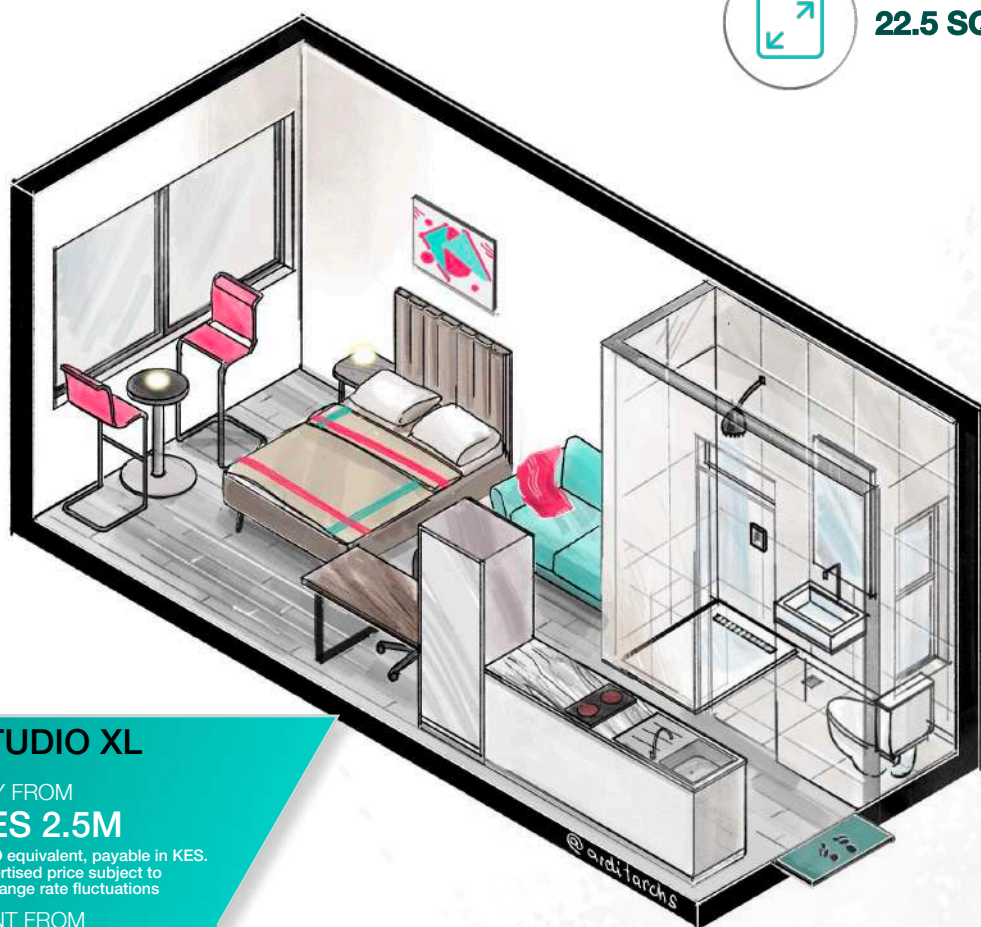
EXPERIENCE LLIVAGE | **STAY** . SHOP . SOCIALISE



22.5 SQM



**KMRC Mortgage
Compliant**



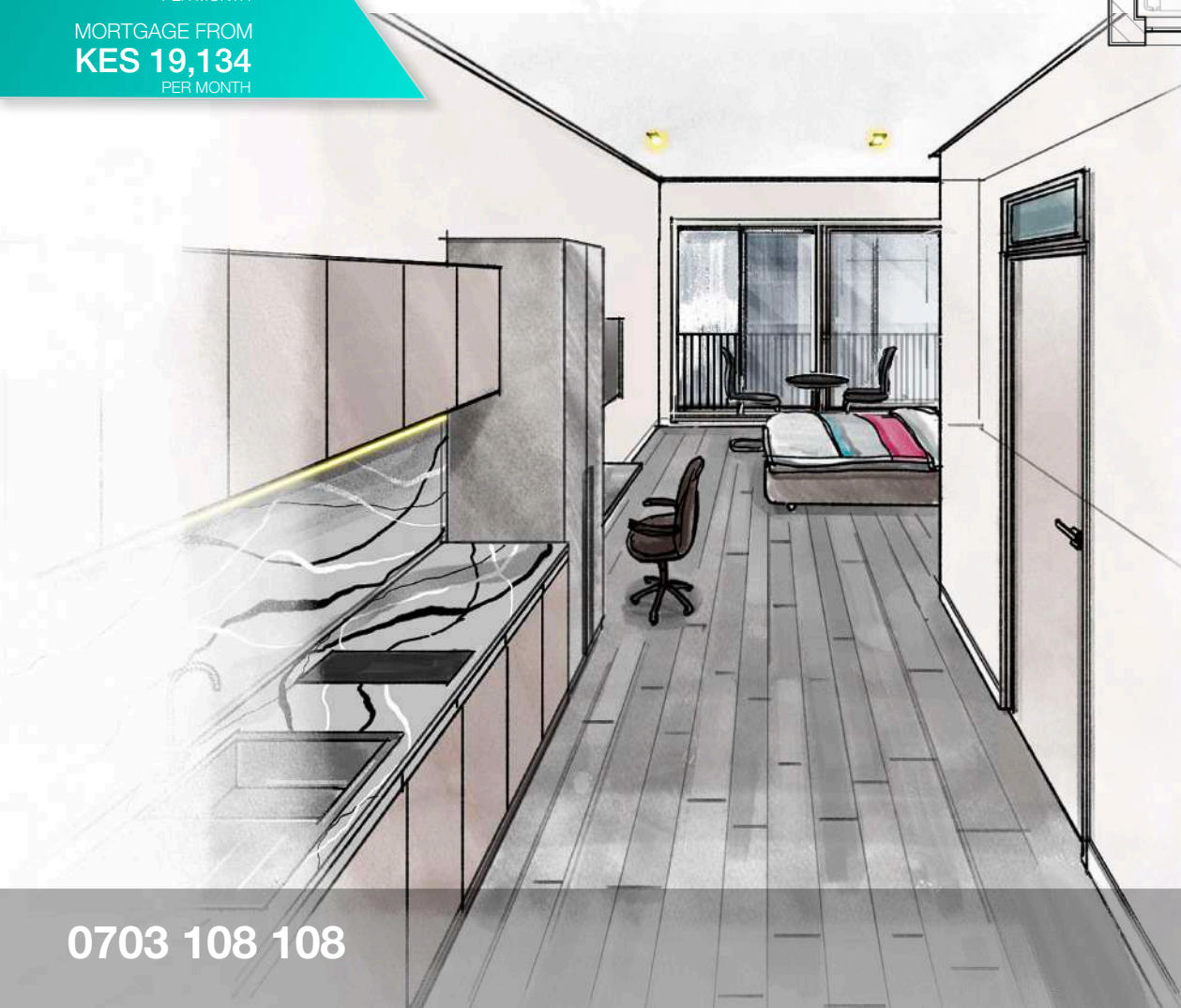
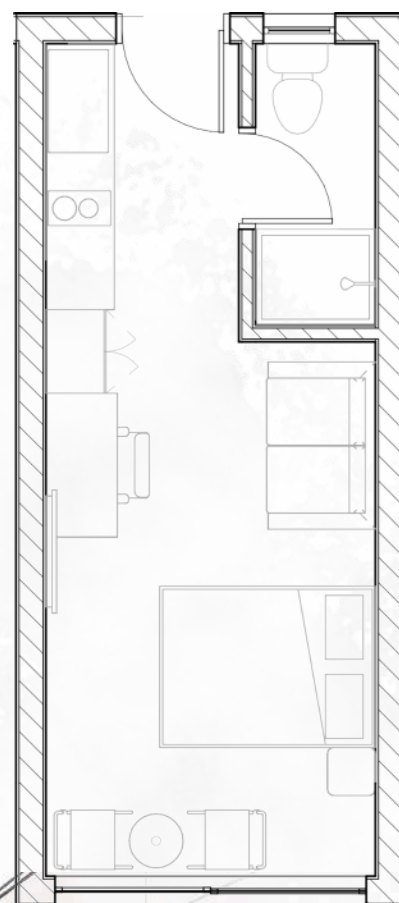
STUDIO XL

BUY FROM
KES 2.5M

*USD equivalent, payable in KES.
Advertised price subject to
exchange rate fluctuations

RENT FROM
KES 14,500
PER MONTH

MORTGAGE FROM
KES 19,134
PER MONTH



0703 108 108

kongoweavillage.co.ke

LIVE YOUR LIFE THE FUN 20s

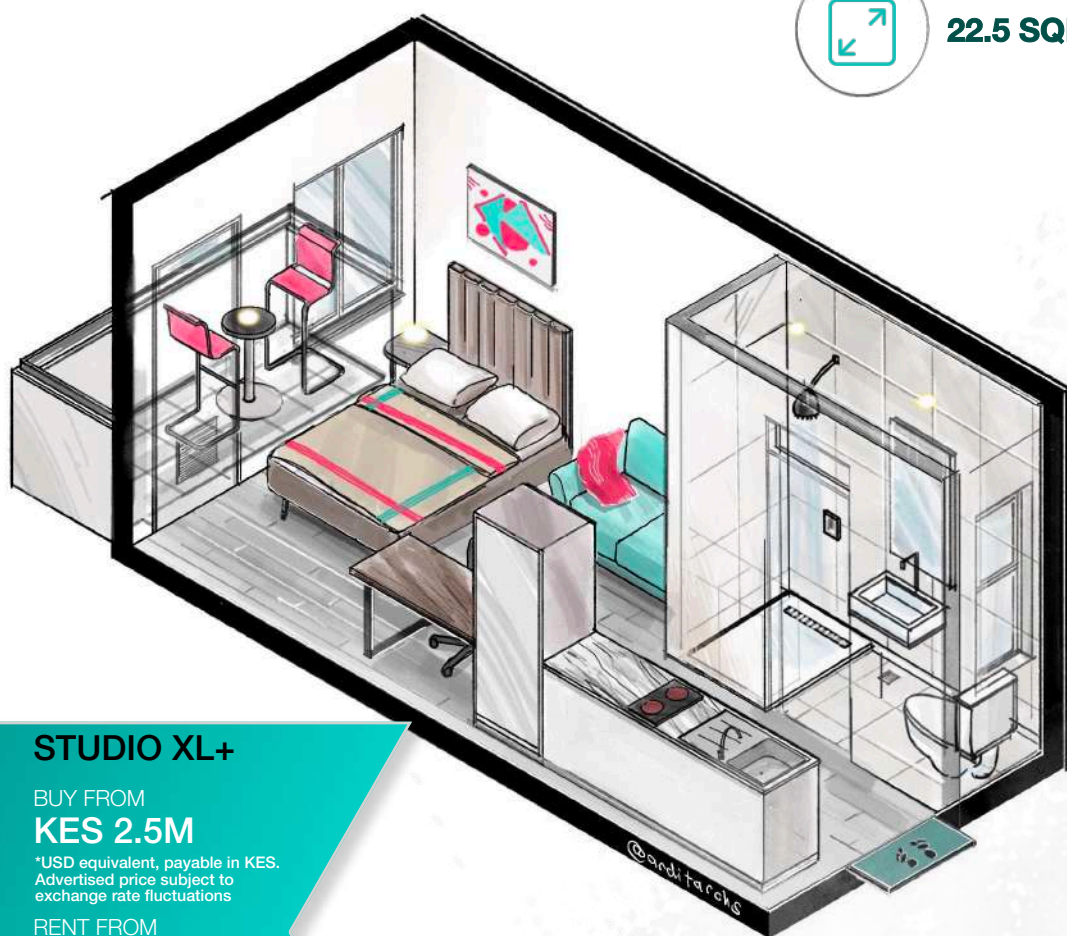
EXPERIENCE LLIVAGE | **STAY** . SHOP . SOCIALISE



22.5 SQM



**KMRC Mortgage
Compliant**



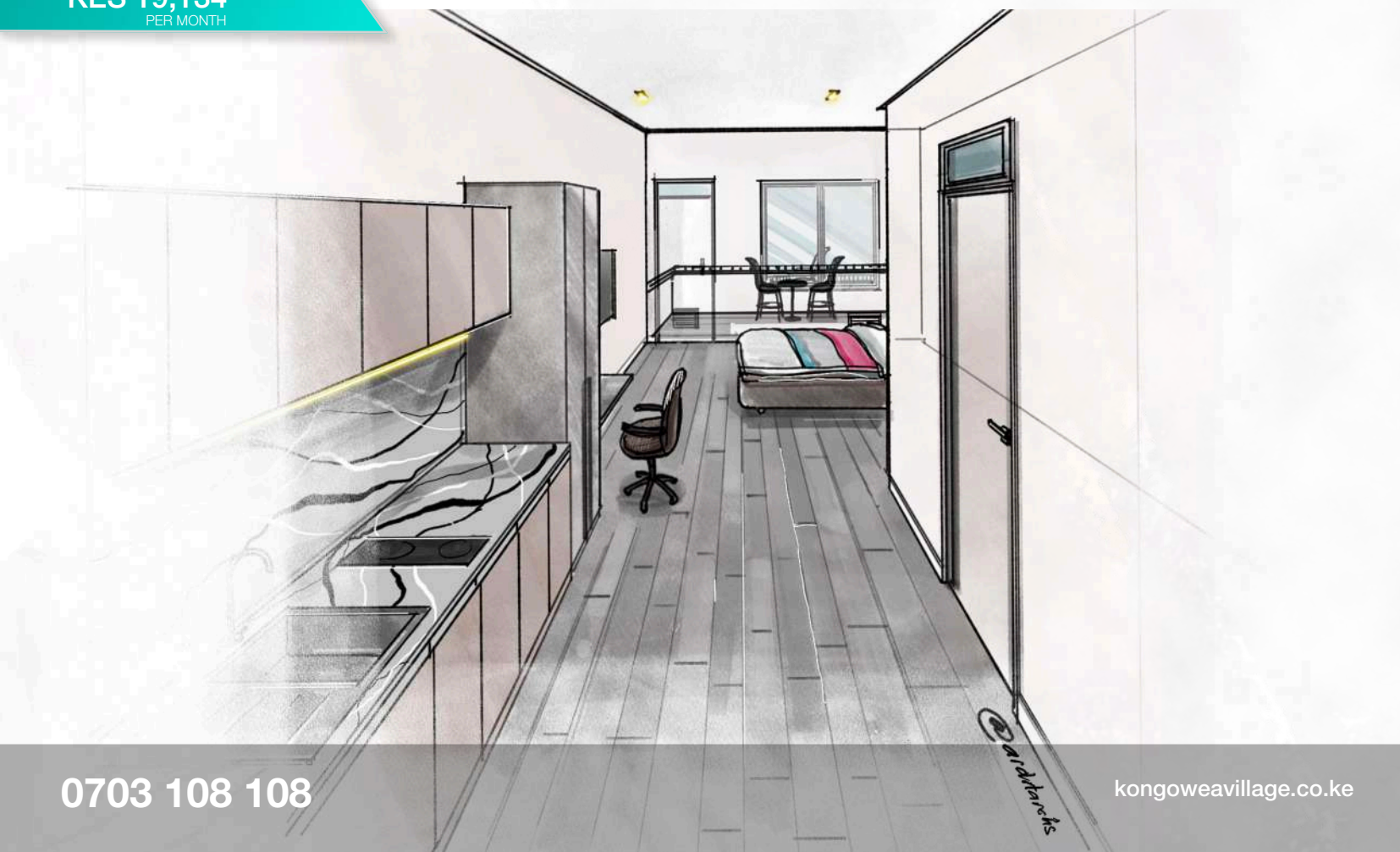
STUDIO XL+

BUY FROM
KES 2.5M

*USD equivalent, payable in KES.
Advertised price subject to
exchange rate fluctuations

RENT FROM
KES 14,500
PER MONTH

MORTGAGE FROM
KES 19,134
PER MONTH



0703 108 108

kongoweavillage.co.ke

LIVE OR LET THE ACTIVE 31s

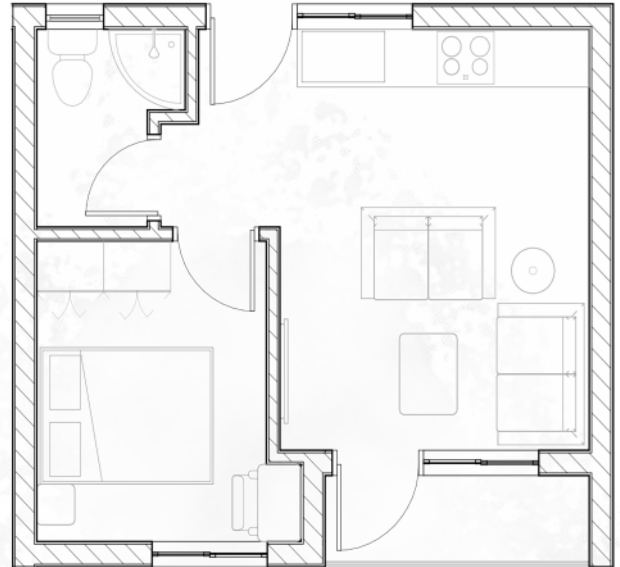
EXPERIENCE LLIVAGE | **STAY** . SHOP . SOCIALISE



31.8 SQM



**KMRC Mortgage
Compliant**



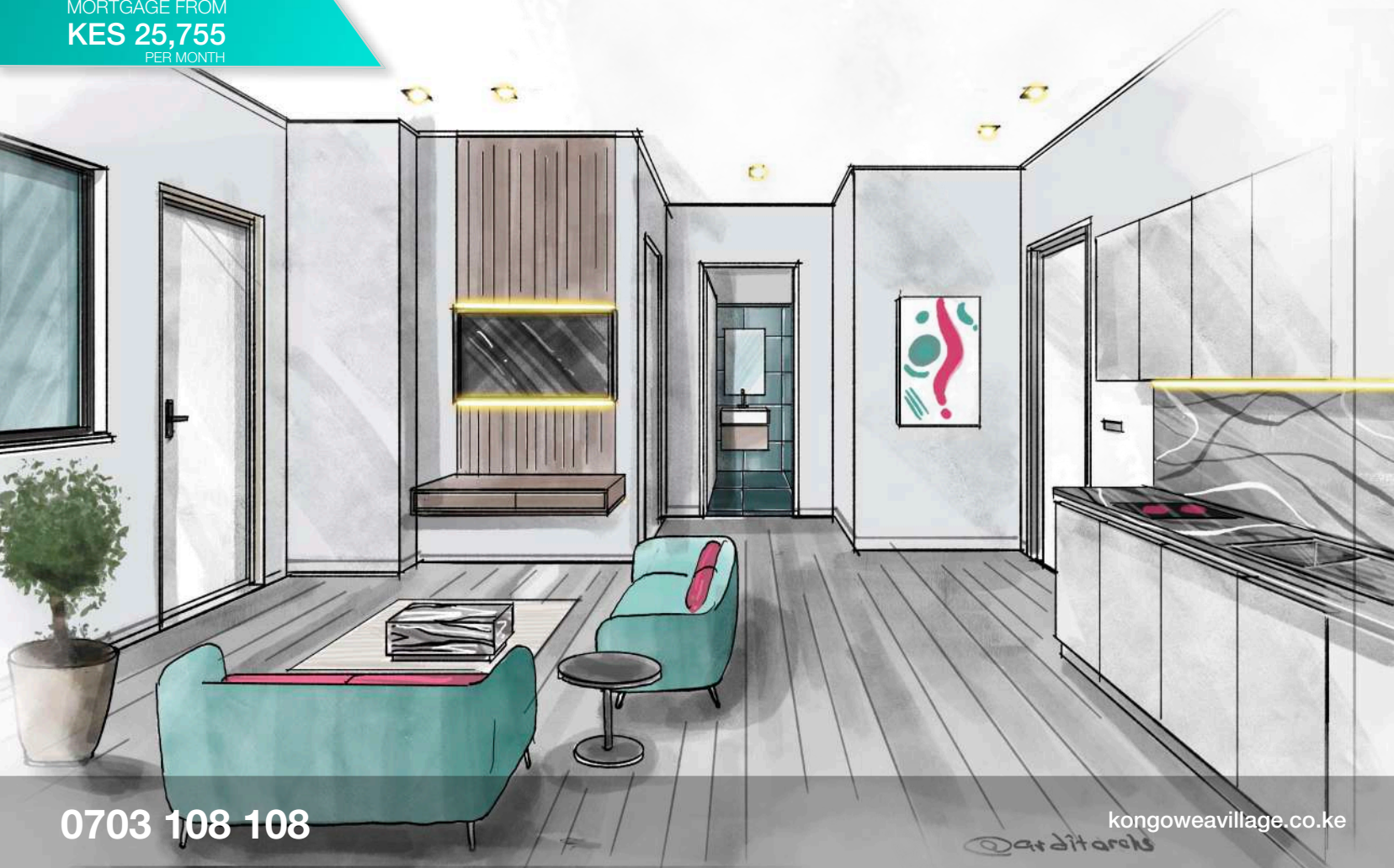
1 BED 1 BATH

BUY FROM
KES 3.4M

*USD equivalent, payable in KES.
Advertised price subject to
exchange rate fluctuations

RENT FROM
KES 20,000
PER MONTH

MORTGAGE FROM
KES 25,755
PER MONTH



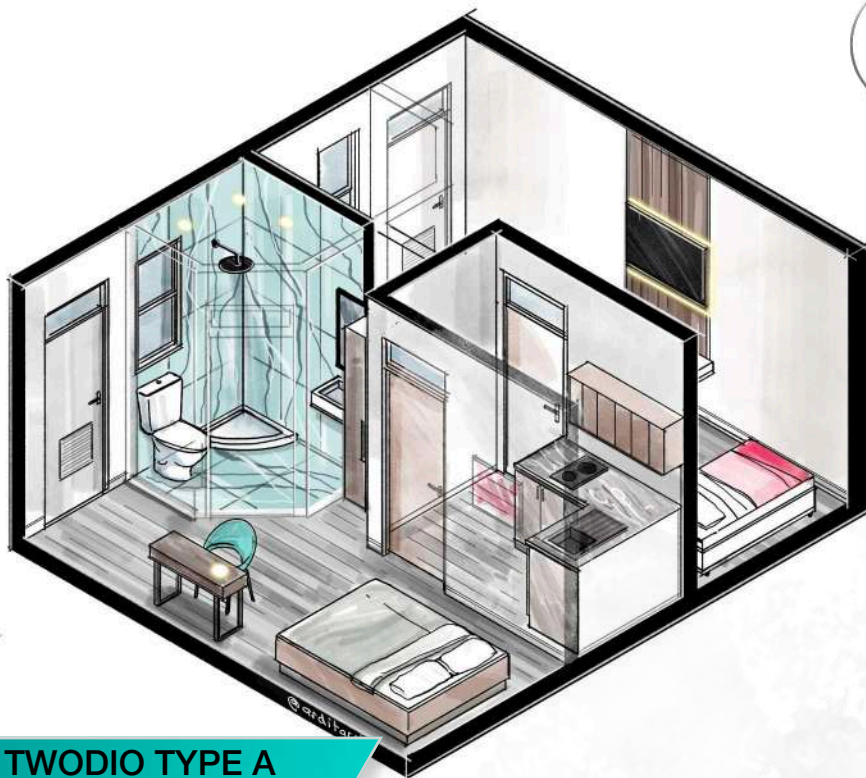
0703 108 108

kongoweavillage.co.ke

@arbitareks

LET THE ACTIVE 31s

EXPERIENCE LLIVAGE | **STAY** . SHOP . SOCIALISE



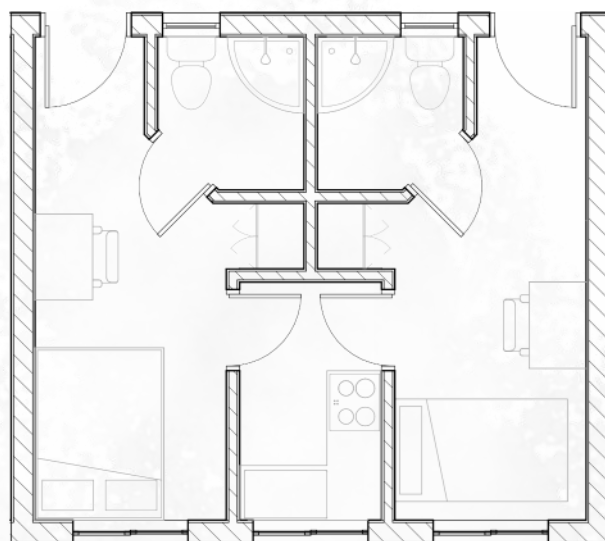
Colive



31.8 SQM



**KMRC
Mortgage
Compliant**



TWODIO TYPE A

BUY FROM
KES 3.8M

*USD equivalent, payable in KES.
Advertised price subject to
exchange rate fluctuations

RENT FROM
KES 22,000
PER MONTH

MORTGAGE FROM
KES 28,832
PER MONTH



0703 108 108

kongowevillage.co.ke

LIVE AND LET THE ACTIVE 31s

EXPERIENCE LLIVAGE | **STAY** . SHOP . SOCIALISE



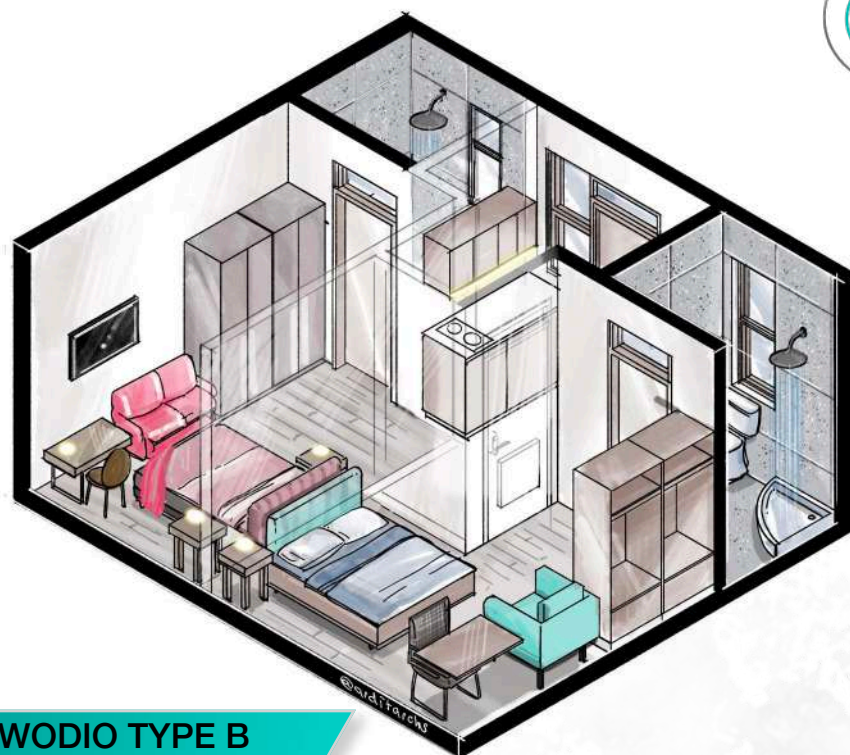
Colive



31.8 SQM



**KMRC
Mortgage
Compliant**



TWODIO TYPE B

BUY FROM

KES 3.8M

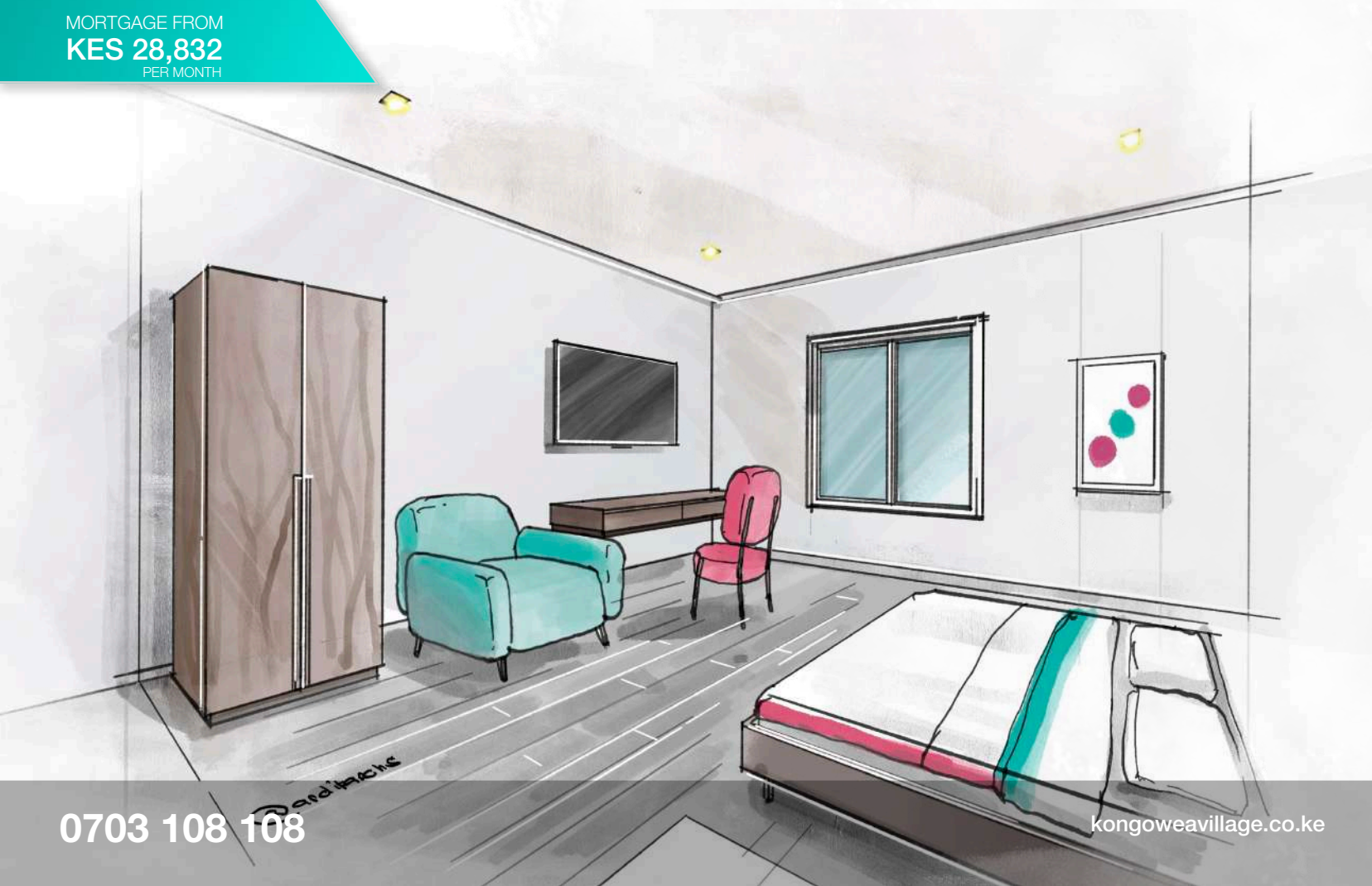
*USD equivalent, payable in KES.
Advertised price subject to
exchange rate fluctuations

RENT FROM

KES 22,000
PER MONTH

MORTGAGE FROM

KES 28,832
PER MONTH

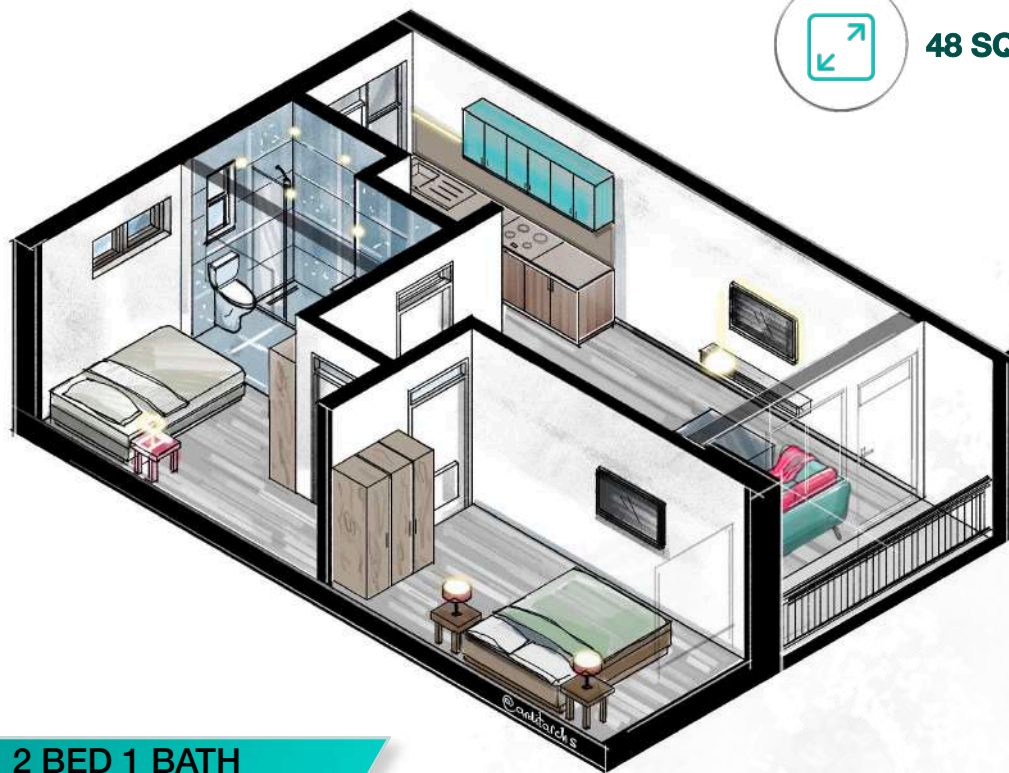


0703 108 108

kongoweavillage.co.ke

LIVE YOUNG THE ROARING 48s

EXPERIENCE LLIVAGE | **STAY** . SHOP . SOCIALISE



48 SQM



**KMRC Mortgage
Compliant**

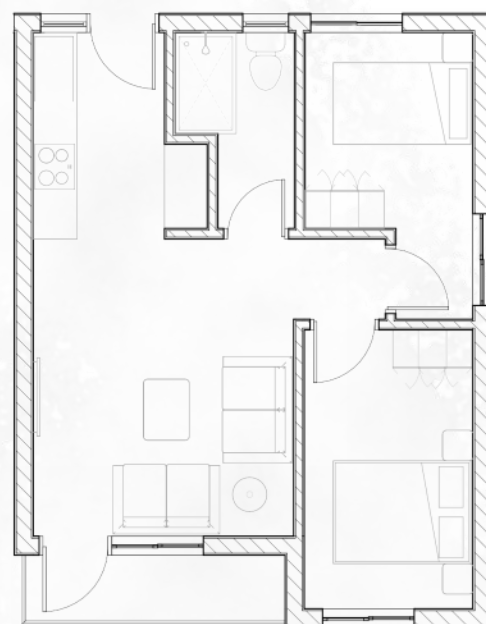
2 BED 1 BATH

BUY FROM
KES 5.1M

*USD equivalent, payable in KES.
Advertised price subject to
exchange rate fluctuations

RENT FROM
KES 29,500
PER MONTH

MORTGAGE FROM
KES 38,875
PER MONTH



0703 108 108

kongoweavillage.co.ke

LIVE YOUNG THE ROARING 48s

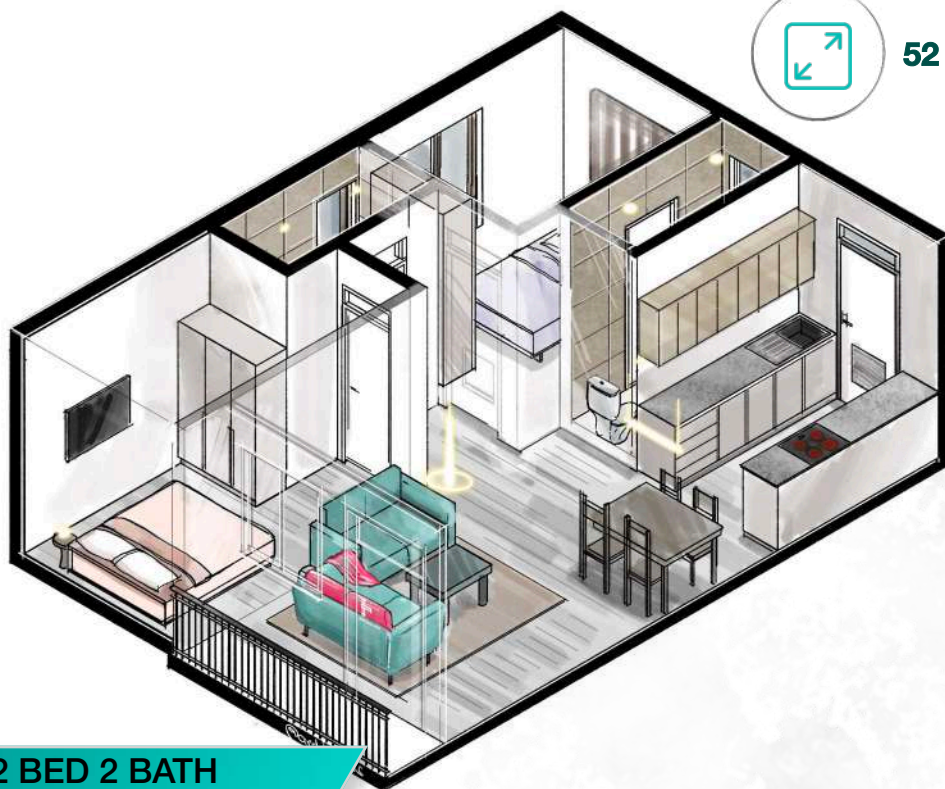
EXPERIENCE LLIVAGE | **STAY** . SHOP . SOCIALISE



52 SQM



**KMRC Mortgage
Compliant**



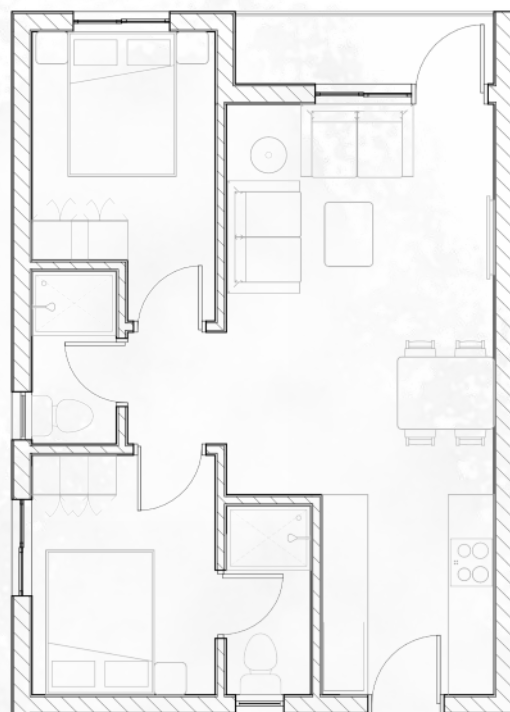
2 BED 2 BATH

BUY FROM
KES 5.9M

*USD equivalent, payable in KES.
Advertised price subject to
exchange rate fluctuations

RENT FROM
KES 34,500
PER MONTH

MORTGAGE FROM
KES 44,970
PER MONTH



0703 108 108

kongoweavillage.co.ke

LIVE, LOVE, LAUGH
THE FAMILY 80s

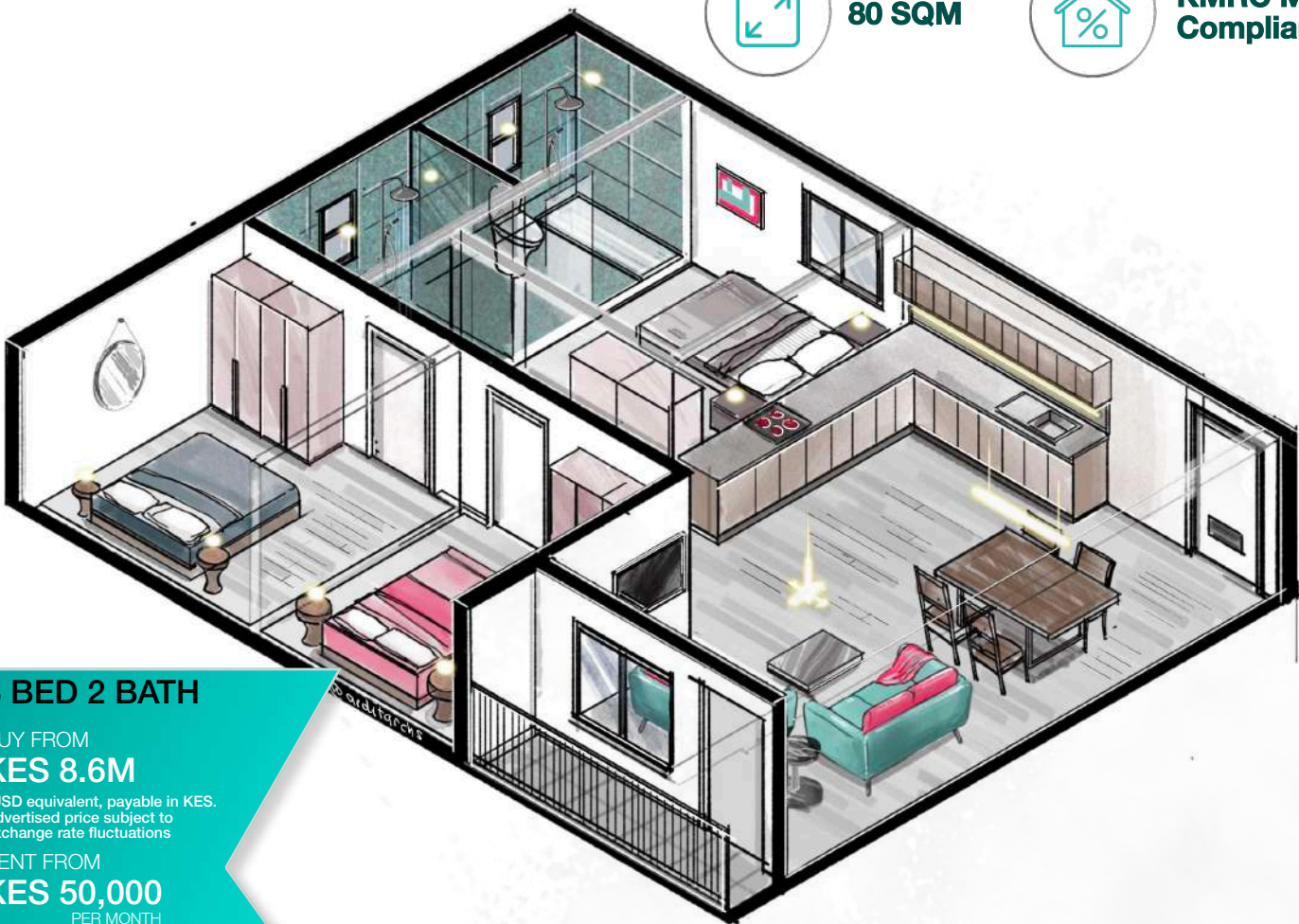
EXPERIENCE LLIVAGE | STAY . SHOP . SOCIALISE



80 SQM



KMRC Mortgage
Compliant



3 BED 2 BATH

BUY FROM
KES 8.6M

*USD equivalent, payable in KES.
Advertised price subject to
exchange rate fluctuations

RENT FROM
KES 50,000
PER MONTH

MORTGAGE FROM
KES 64,791
PER MONTH



0703 108 108

kongoweavillage.co.ke

LIVE, LOVE, LAUGH THE FAMILY 80s

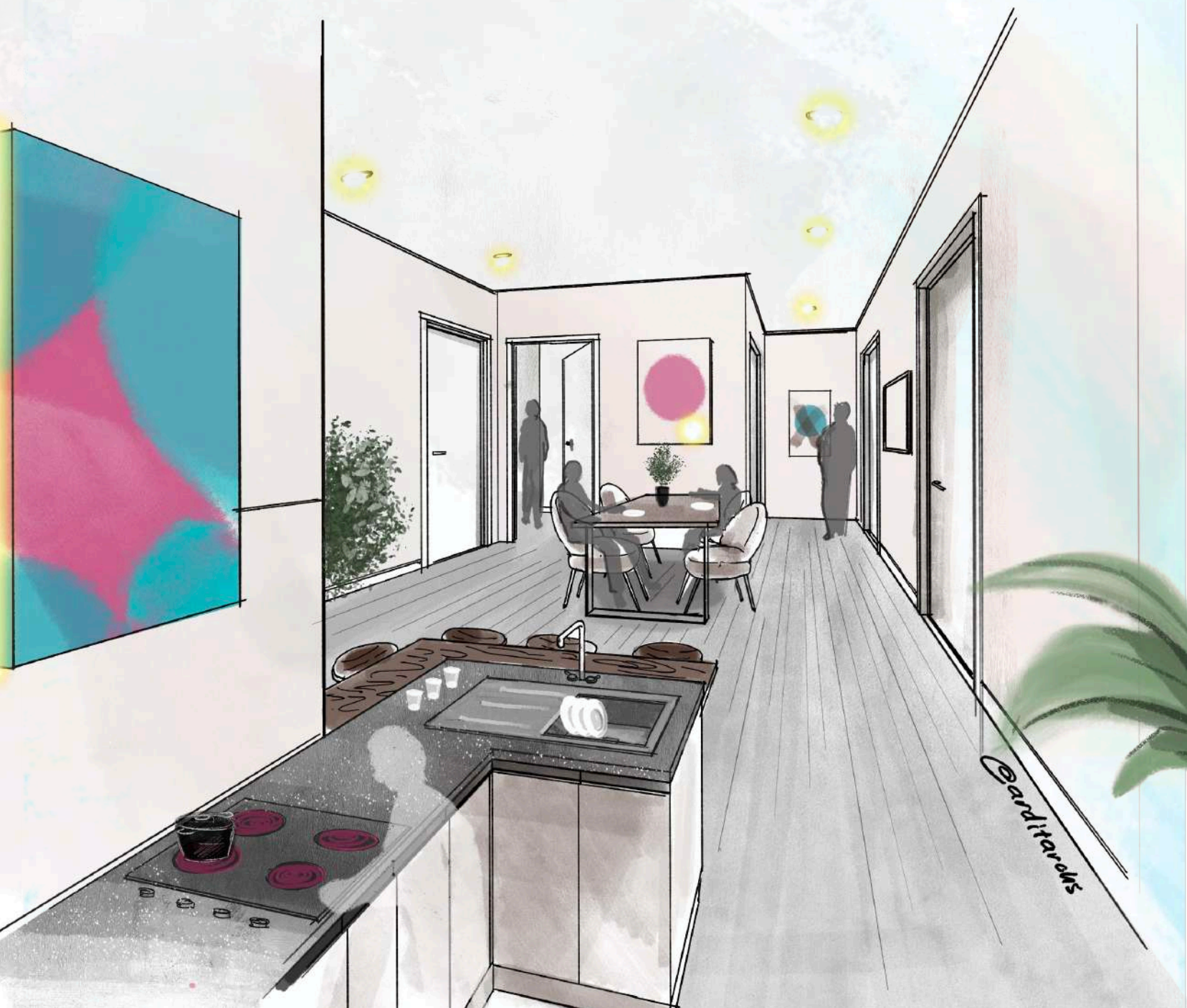
EXPERIENCE LLIVAGE | **STAY** . SHOP . SOCIALISE



COLIVE: a smart, modern and fun way of living in large shared spaces at an economical price.

What you get:

- ✓ Private ensuite bedrooms
- ✓ Well-equipped shared kitchen
- ✓ Communal Lounge areas
- ✓ Fully furnished (optional)





Institutional
Investors



Colive



171 SQM



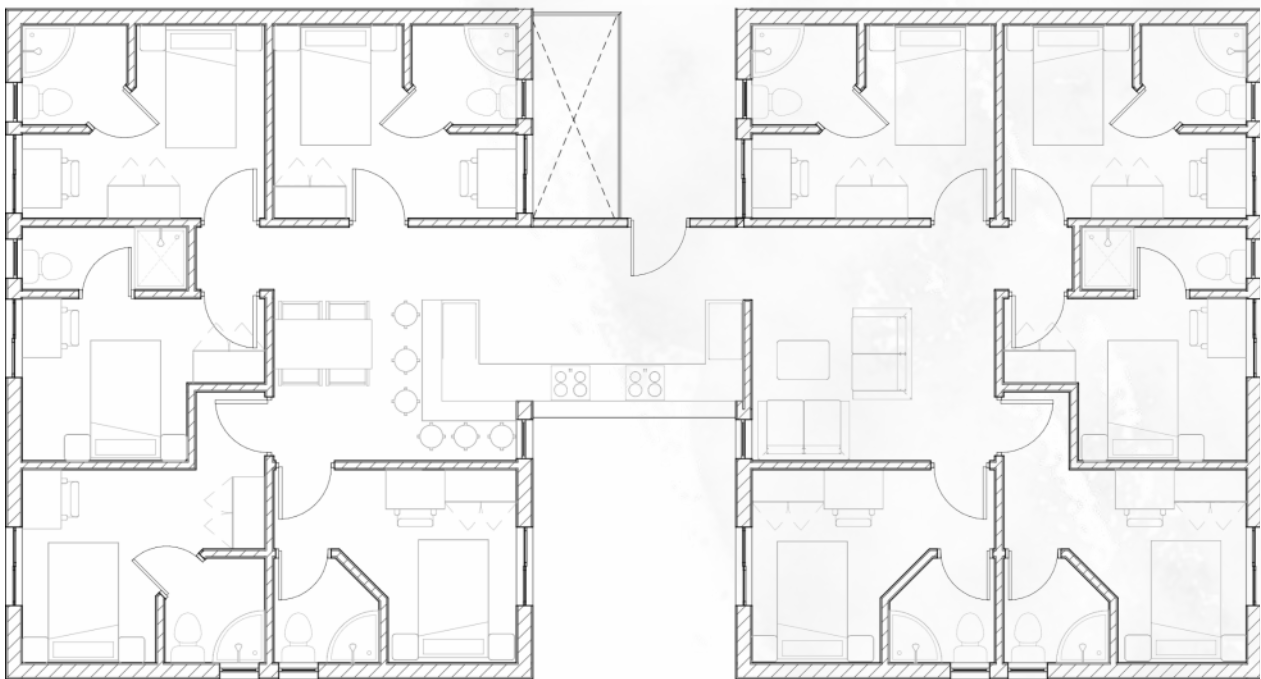
COLIVE

RENT FROM
KES 11,000
PER ROOM PER MONTH

**STABLE
INVESTMENT
RETURNS**

Ideal for:

- ✓ Students
- ✓ Digital Nomads
- ✓ Relocating Souls
- ✓ Business Travelers
- ✓ Young Professionals





Children's Play Area



Salon



Restaurants and Bars



Crafts, Culture & Entertainment



Daycare



Gym

and more....



SHOP

YOUR CONVENIENCE

EXPERIENCE LLIVAGE | STAY . **SHOP** . SOCIALISE



Food Court



Mini Marts



Launderette



Banks



Medical Services



Green Grocers

and more....



Welcome to Kongowea Village

A modern Village within Mombasa City, commencing in Q1 2024.

UPGRADE YOUR LIFESTYLE TO LLIVAGE



Walkability



24 HR Security
+ CCTV



Water
Treatment



Back-up Power
Supply

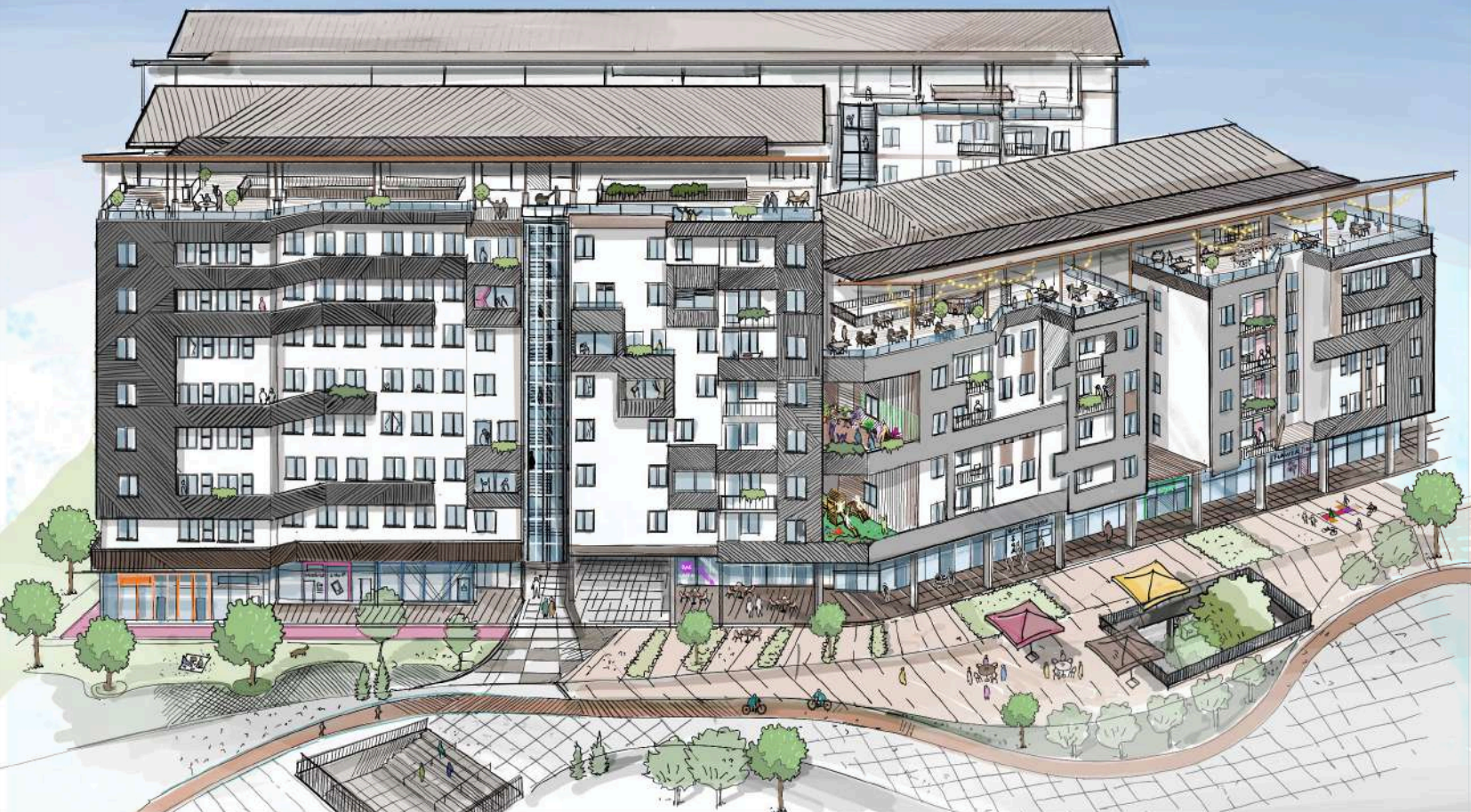


Water Storage



Disabled
Friendly

and more....



OFF PLAN	<div>10% DISCOUNT*</div> <div>DEPOSIT: 20% UPFRONT</div> <div>BALANCE: 80% AT GROUND BREAK</div> <div>*Limited Offer</div>	<div>SOLD</div>
EARLY BIRD	<div>7.5% DISCOUNT*</div> <div>DEPOSIT: 20% UPFRONT</div> <div>BALANCE: 80% AT GROUND BREAK</div> <div>*Limited Offer</div>	
CASH OFFER	<div>5% DISCOUNT*</div> <div>DEPOSIT: 20% UPFRONT</div> <div>BALANCE: 80% AT GROUND BREAK</div> <div>*Limited Offer</div>	
PAYMENT PLAN	<div>DEPOSIT: 10% UPFRONT</div> <div>DEPOSIT: 10% GROUND BREAK</div> <div>BALANCE: 80% OVER INSTALLMENTS DURING CONSTRUCTION</div>	
KEYS HANDOVER PLAN*	<div>DEPOSIT: 10% UPFRONT</div> <div>DEPOSIT: 10% GROUND BREAK</div> <div>BALANCE: 80% AT KEYS HAND OVER</div>	
MORTGAGE PLAN*	<div>DEPOSIT: 10% UPFRONT</div> <div>DEPOSIT: 10% GROUND BREAK</div> <div>BALANCE: 80% AT KEYS HAND OVER</div> <div>*KMRC MORTGAGE FACILITY AVAILABLE THROUGH OUR PARTNERS</div>	

Institutional / Corporate plan

will be based on respective proposals for blocks / phases

<div>THE FUN 20s</div> <div>BUY FROM: RENT FROM: MORTGAGE: SIZE:</div>	<div>STUDIO</div> <div>KES 2.1M* KES 12,000 PER MONTH KES 15,793 PER MONTH 19.5 SQM 209.8 SQFT</div>	<div>STUDIO XL</div> <div>KES 2.5M* KES 14,500 PER MONTH KES 19,134 PER MONTH 22.5 SQM 242 SQFT</div>	<div>STUDIO XL+</div> <div>KES 2.5M* KES 14,500 PER MONTH KES 19,134 PER MONTH 22.5 SQM 242 SQFT</div>
<div>THE ACTIVE 31s</div> <div>BUY FROM: RENT FROM: MORTGAGE: SIZE:</div>	<div>1 BED</div> <div>KES 3.4M* KES 20,000 PER MONTH KES 25,755 PER MONTH 31.8 SQM 342 SQFT</div>	<div>TWODIO A</div> <div>KES 3.8M* KES 22,000 PER MONTH KES 28,832 PER MONTH 31.8 SQM 342 SQFT</div>	<div>TWODIO B</div> <div>KES 3.8M* KES 22,000 PER MONTH KES 28,832 PER MONTH 31.8 SQM 342 SQFT</div>
<div>THE ROARING 48s</div> <div>BUY FROM: RENT FROM: MORTGAGE: SIZE:</div>	<div>2 BED 1 BATH</div> <div>KES 5.1M* KES 29,500 PER MONTH KES 38,875 PER MONTH 48 SQM 516.5 SQFT</div>	<div>2 BED 2 BATH</div> <div>KES 5.9M* KES 34,500 PER MONTH KES 44,970 PER MONTH 52 SQM 551.5 SQFT</div>	
<div>THE FAMILY 80s</div> <div>BUY FROM: RENT FROM: MORTGAGE: SIZE:</div>	<div>3 BED 2 BATH</div> <div>KES 8.6M* KES 50,000 PER MONTH KES 64,971 PER MONTH 80 SQM 860.8 SQFT</div>		
<div>COLIVE</div> <div>BUY FROM: RENT FROM: SIZE:</div>	<div>EN-SUITE ROOMS</div> <div>AVAILABLE ON REQUEST KES 11,000 PER MONTH PER ROOM 171 SQM 1722.23 SQFT</div>		

Looking to Rent?

Call us on: 0703 108 108

or email us at: rent@kongoweavillage.co.ke



7% YIELD | 15% CAPITAL APPRECIATION

A unique investible asset class
A prime location
A true inflation hedge



>7% YIELD WITH SHORT LETS

Passive Income: Watch your money grow



KMRC MORTGAGE COMPLIANT

Own now, Pay over time



HIGH TRAFFIC COMMUNITY: FOR YOUR RETAIL BUSINESS

Exposure to footfall of approximately 35,000 persons a day



GREEN BUILDING

Sustainable building for sustainable living



RENTAL MANAGEMENT

A fully managed, secure environment



SELECT YOUR HOME

1. Send us your inquiry:

- ☑ Call us on 0703 108 108
- ☑ Email us on sales@kongoweavillage.co.ke
- ☑ Visit kongoweavillage.co.ke and fill in the contact form

2. Choose your payment plan



RESERVE YOUR HOME

1. Receive an Offer

- 2. Pay your deposit & processing fee
- 3. Sign the reservation form



OWN YOUR HOME

1. Sign a Sales Agreement

- 2. Complete payment as per your payment plan
- 3. Receive your Keys!

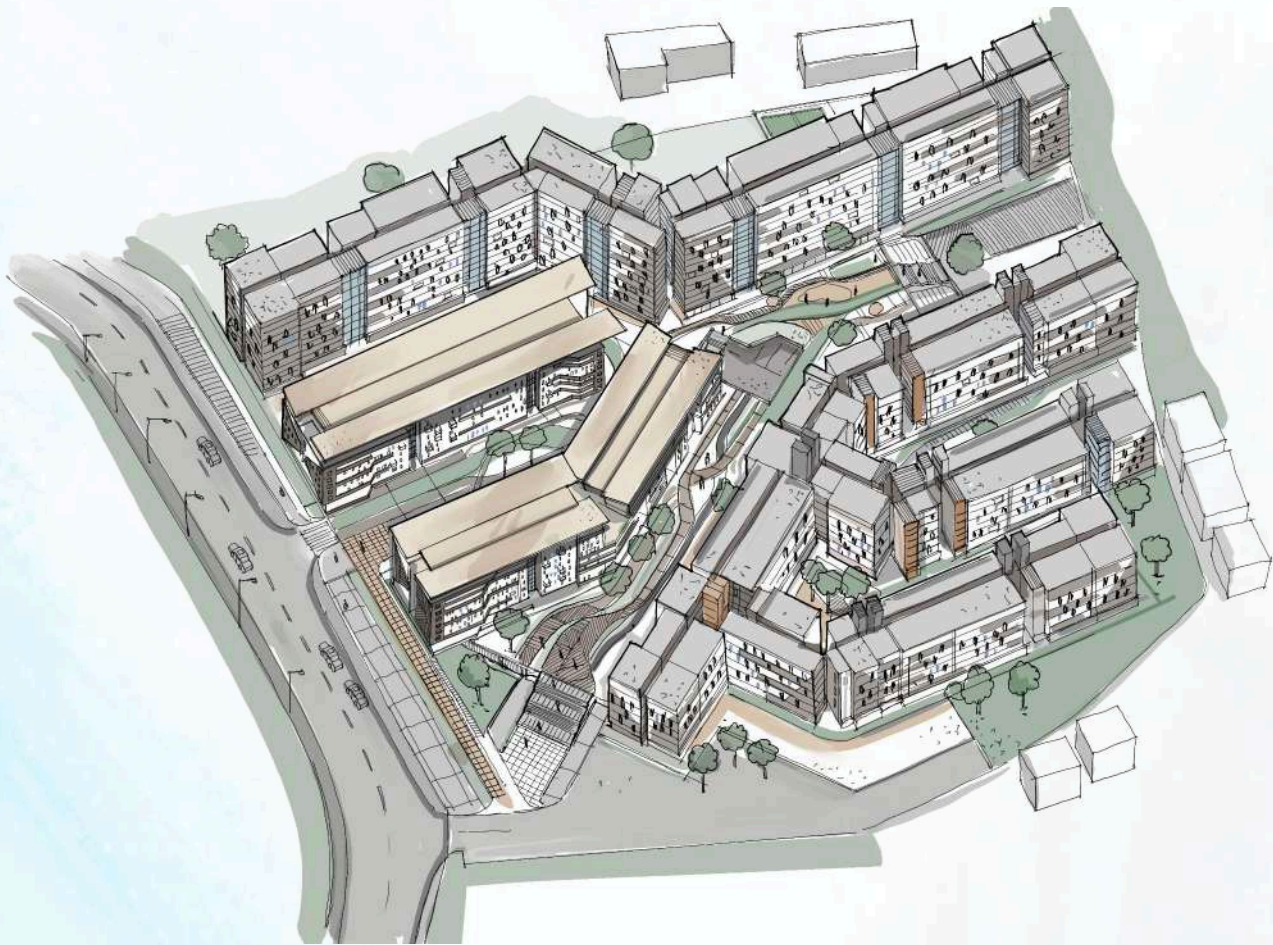
DID YOU KNOW?

All units within Kongowea Village qualify for a KMRC Mortgage...

Investing in affordable housing offers greater liquidity compared to traditional property investments.



kongoweavillage.co.ke



KONGOWEA VILLAGE

0703 108 108

SALES@KONGOWEAVILLAGE.CO.KE

    /kongoweavillage



KAYDEE
DIG DEEP . REACH HIGH



All information, details, specifications, plans, images ("information") included in the Kongowea Village brochure, website, email or any marketing materials are indicative and shown for reference only. Actual product and specifications may vary in dimension or detail. Pricing as advertised is in USD and can be payable in KES equivalent at the prevailing conversation rate at time of payment. Prices may vary as per exchange rate fluctuation.

For details, please contact the Sales Centre on 0703 108 108

© Copyright - Belco Properties LLP